



eit

Knowledge &  
Innovation  
Community

EIT ICT Labs





# EIT ICT Labs – Information & Communication Technology Labs

## General Overview



# Tackling the European Paradox

The European Paradox refers to the presumption that **EU member states** play a leading global role in terms of **top-level scientific output**, but lag behind in the ability of **converting this strength into wealth-generating innovations**.

- The EIT was established as a new EU instrument for promoting innovation in Europe
- It does not replace other existing EU initiatives (e.g. EU Framework Programmes), but adds to them by setting its focus on bringing research results to market



# EIT ICT Labs Introduction

## Profile

- EIT ICT Labs is the **catalyst for significant ICT innovation**, enhancing the quality of life for everyone.
- By **integrating Education, Research and Business** EIT ICT Labs empowers top talents to lead Europe into a new ICT age.

## Vision

- “ICT innovation is our key enabler to enhance the quality of life for everyone.”

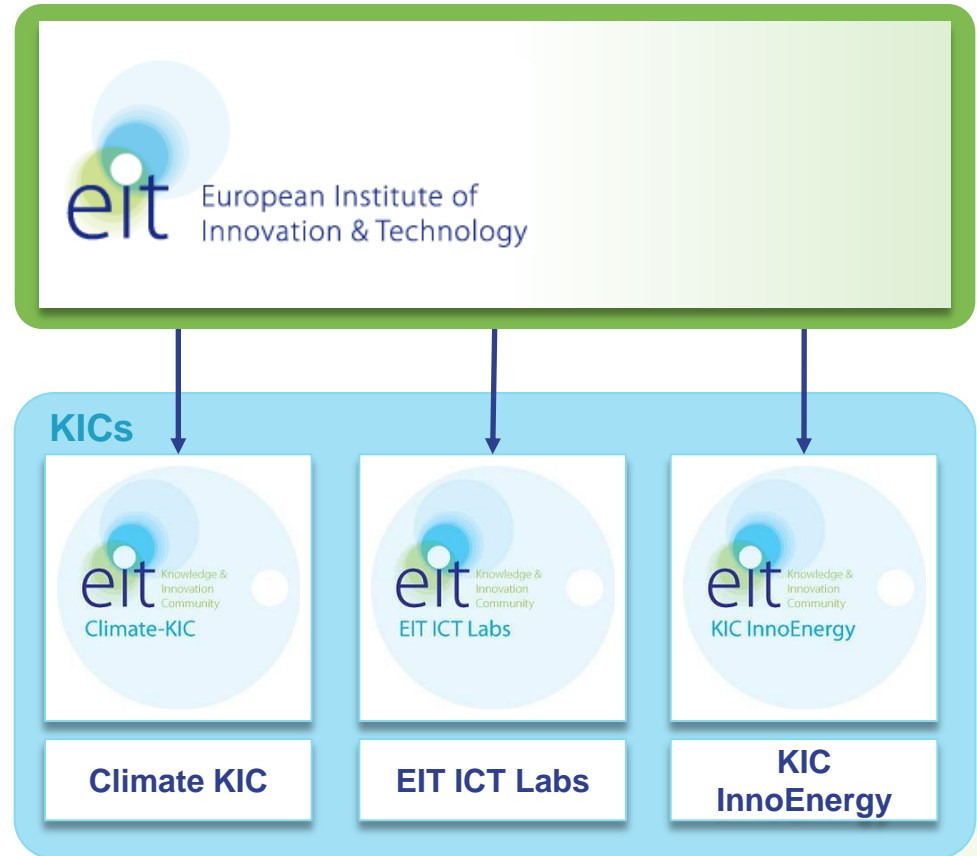
## Mission

- “Turn Europe into a global leader in ICT Innovation.”



# The EIT and its KICs

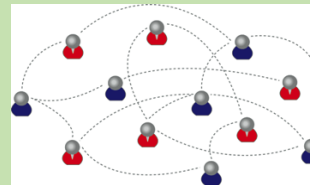
- The **European Institute of Innovation & Technology (EIT)** was legally established in 2008 as an independent agency within the EU
- It funds **Knowledge and Innovation Communities (KICs)**
  - Official call and selection of the first three KICs in 2009
  - First KICs fully operational in December 2010





# ICT is drastically changing our lives

The way we connect



Blending of digital & physical world

The way we travel



The way we work



The way we prevent and deal with diseases



Today

Tomorrow

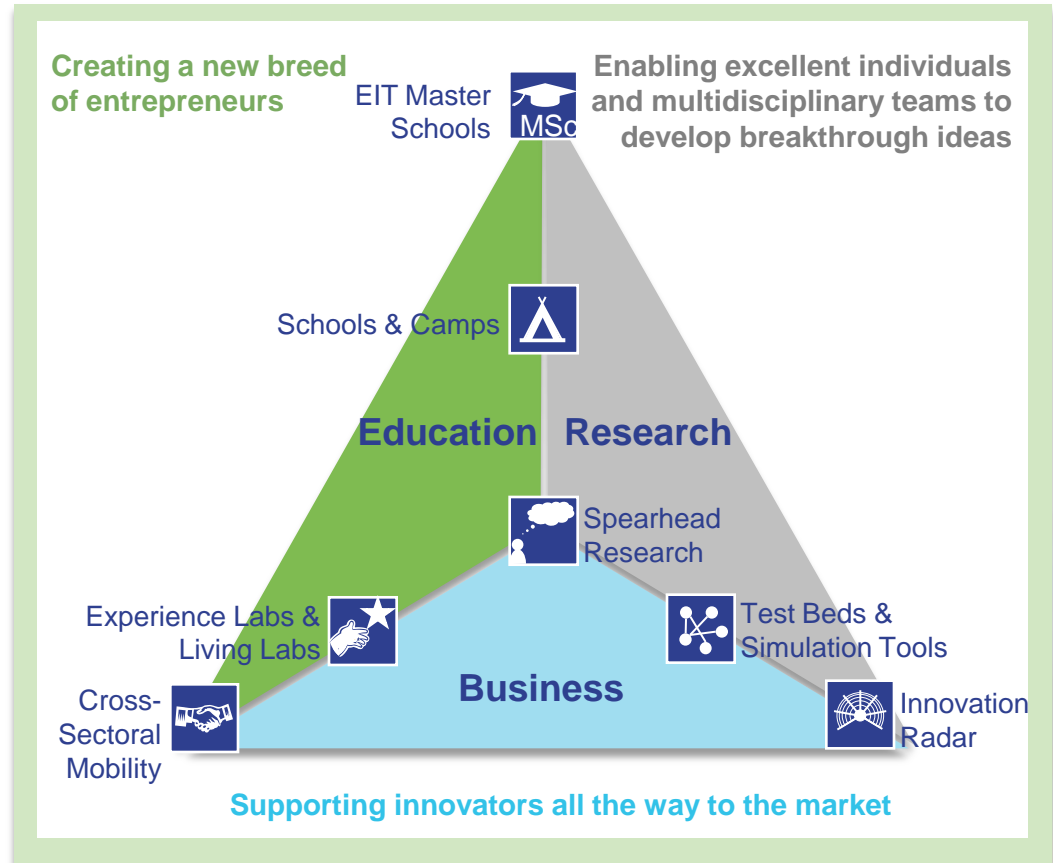


# EIT ICT Labs Strategy

## Integrating the Knowledge Triangle

Innovate across Education, Research and Business

- Educate a new generation of business savvy ICT professionals
- Combine Europe's excellence in ICT to foster world-leading ICT innovations
- Create a business-minded framework for ICT innovations
- Establish a network of world-class co-location centres to foster new ideas





# Co-Location Centres European Innovation Hotspots

- EIT ICT Labs operates from **Co-location Centres (CLCs)** in 5 nodes
- CLCs are **places** where individuals from different types of organisations and cultures **work together face-to-face** and move forward effectively towards KIC goals
- CLCs are equipped with state-of-the-art communication technologies that facilitate **cross-node collaboration**





# Strong European Partners

Complete and complementary world-class innovation nodes

**Berlin**

Deutsche Telekom Laboratories

Logos for Deutsche Telekom Laboratories, Siemens, SAP, DFK, and FhG. A photograph of a modern building in Berlin is shown at the bottom.

**Eindhoven**

**NIRICT**

**PHILIPS**

**novay**  
NETWORKED INNOVATION

A photograph of a building in Eindhoven is shown at the top. Below it are the logos for NIRICT, Philips, and Novay (Networked Innovation).

**Helsinki**

**A?** Aalto University

**NOKIA**

**VTT**

Logos for Aalto University (A?), Nokia, and VTT.

**Paris**

**INRIA** **INSTITUT TELECOM**

**orange** Alcatel-Lucent

**UPMC** **UNIVERSITÉ PARIS-SUD 11**

+ Academic and industrial clusters

Logos for INRIA, Institut Telecom, Orange, Alcatel-Lucent, UPMC, and Université Paris-Sud 11. A photograph of a building in Paris is shown at the bottom.

**Stockholm**

**ERICSSON**

**SICS** **KTH**

Logo for Ericsson. A photograph of a building in Stockholm is shown in the middle. Logos for SICS and KTH are at the bottom.

+

Associate clusters in Budapest, London, Trento

Each node features at least:

- One strong research institute
- One major university
- One European-based multinational company
- Active regional network of SME
- Full national and regional support



# EIT ICT Labs' Action Lines

- Our **Thematic Action Lines** address key societal issues in a number of selected areas.
- The **Innovation Action Lines** create cross-node and cross-theme uniformity within the KIC.



# Thematic Action Lines



In **Smart Spaces** we will create intelligent environments that facilitate everyday practices, create richer user experiences and enhance the users' awareness of local opportunities in a resource and cost efficient way.



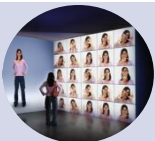
In **Smart Energy Systems** we address the issue of increasing energy efficiency via ICT enabled power grids, as well as energy efficient ICT solutions - green ICT.



In **Health and Well-being** we will improve the quality of everyday life via the development of ICT enabled services supporting a cost effective sustainable healthy lifestyle, as well as ambient assisted living.



In **Digital Cities of the Future** we improve the living conditions for citizens in large urban conglomerations via ICT enabled solutions in the areas of security, pollution, transportation, and resource management (e.g. water).



In **Future Media and Content Delivery** we develop of a powerful and open ICT infrastructure, capable of delivering rich data-intensive media and content storage services, at competitive costs, across administrative domains, ensuring quality of service.



In **Intelligent Transportation Systems** (*under construction*) we enhance services for people using all kinds of transportation systems.



# Innovation Action Lines

Education Action Lines	Research Action Lines	Business Action Lines
Master school	Computing in the Cloud	Market and Consumer Insights
Doctoral school	Internet Technologies and Architectures	Co-located Innovation
Post-doc program (to be started in 2011)	ICT-mediated Human Activity	New Business Creation
Outreach program (to be started in 2011)		Innovation in Established Companies



# Innovation Catalysts (I)

- EIT ICT Labs utilises Innovation Catalysts to push innovation in the five nodes
- Innovation Catalysts enable the efficient execution of activities and often integrate Education, Research and Business
- Building on our European core competences the activities are executed through the collaborating nodes
- Innovation Catalysts are employed to drive innovation in the Thematic Action Lines

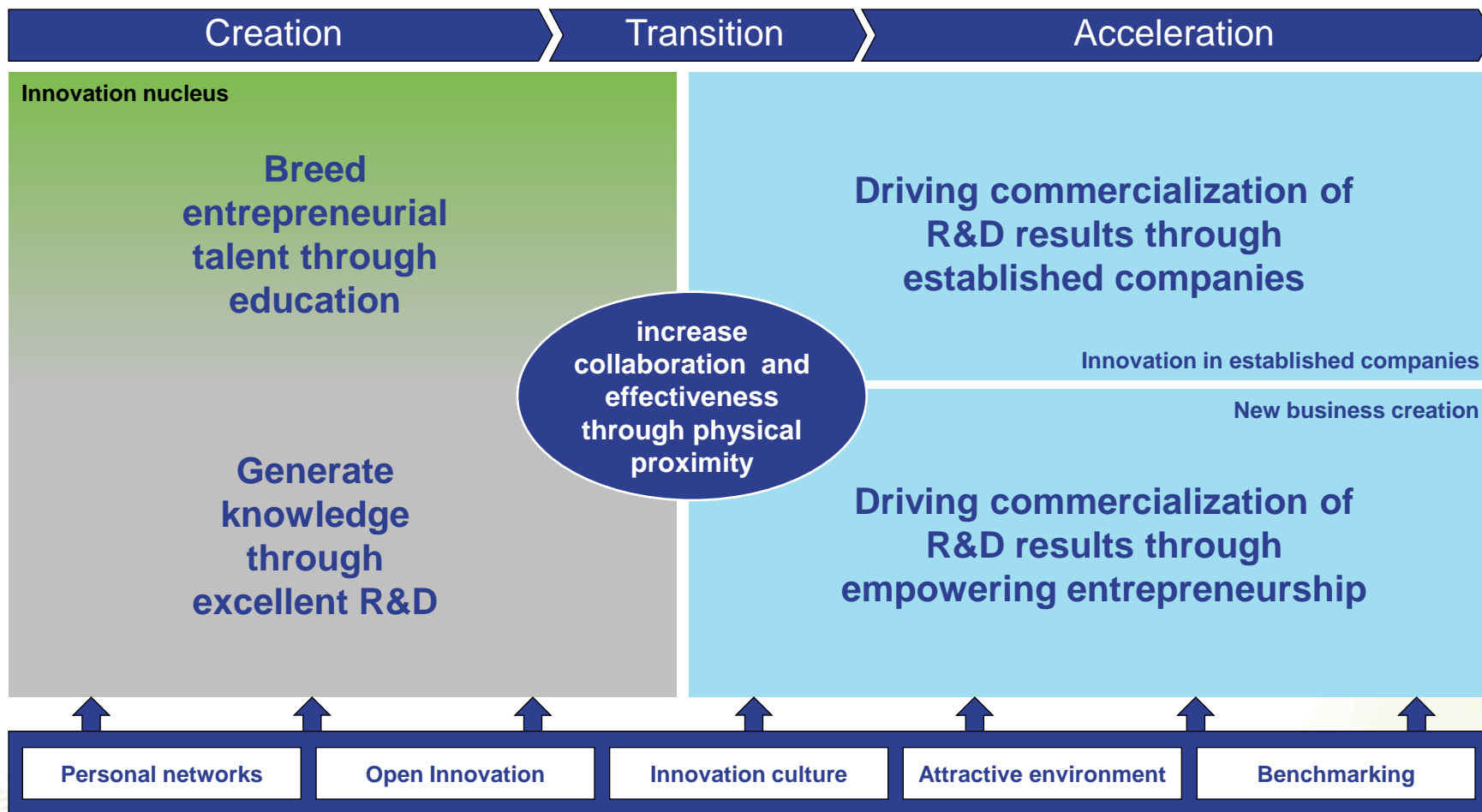


# Innovation Catalysts (II)

Education Catalysts	Research Catalysts	Business Catalysts
<p><b>Innovation &amp; Entrepreneurship Module for Master Programs</b> emphasis on hands-on entrepreneurship &amp; mobility across nodes</p>	<p><b>Thematic Workshops</b> consolidate goals and create networks</p>	<p><b>Entrepreneurship Support Systems</b> mentoring, coaching, incubation, ...</p>
<p><b>Innovation &amp; Entrepreneurship Module for PhD Programs</b> specializations matching the areas of excellence of nodes and inter-node mobility</p>	<p><b>Test Beds, Testing Platforms &amp; Simulation Tools</b> common hardware or software platforms in order to test technologies or applications</p>	<p><b>Innovation Radar</b> including cross-node virtual expert panel</p>
<p><b>Cross-Sectoral Student and Teacher Mobility</b> teacher and student mobility</p>	<p><b>Experience Labs &amp; Living Labs</b> to test and modify product and service designs</p>	<p><b>Best-Practice Benchmarking</b> for designing KIC management</p>
<p><b>Co-location Centres as Educational Catalysts</b> using co-location centres for educational programs and stakeholder integration.</p>	<p><b>Mobility Program</b> Researcher mobility between nodes and between academia and industry</p>	<p><b>Business Club</b> networking across organizational boundaries</p>
<p><b>Quality Assurance Accreditation</b> assuring quality of educational programs</p>	<p><b>Spearhead Research</b> Value-adding new research activities with high innovation potential</p>	<p><b>Entrepreneurs Club</b> including pitching events</p>
<p><b>Summer and Winter Schools and Camps</b> such as code camp (SW development) and business camps (venturing)</p>		<p><b>Access to finance</b> ensure capital availability for all stages</p>
<p><b>Industrial Doctoral Training Centre</b> close integration of doctoral training with industry</p>		<p><b>Pre-Venture Loans</b> to identify and polish innovation</p>
		<p><b>Office Space 2.0</b> implementing common infrastructure of our CLCs for cross-node collaboration</p>
		<p><b>Populating Co-Location Centres</b> planning the utilisation of our CLCs</p>
		<p><b>Technology Transfer Program</b> push research results towards commercialization</p>



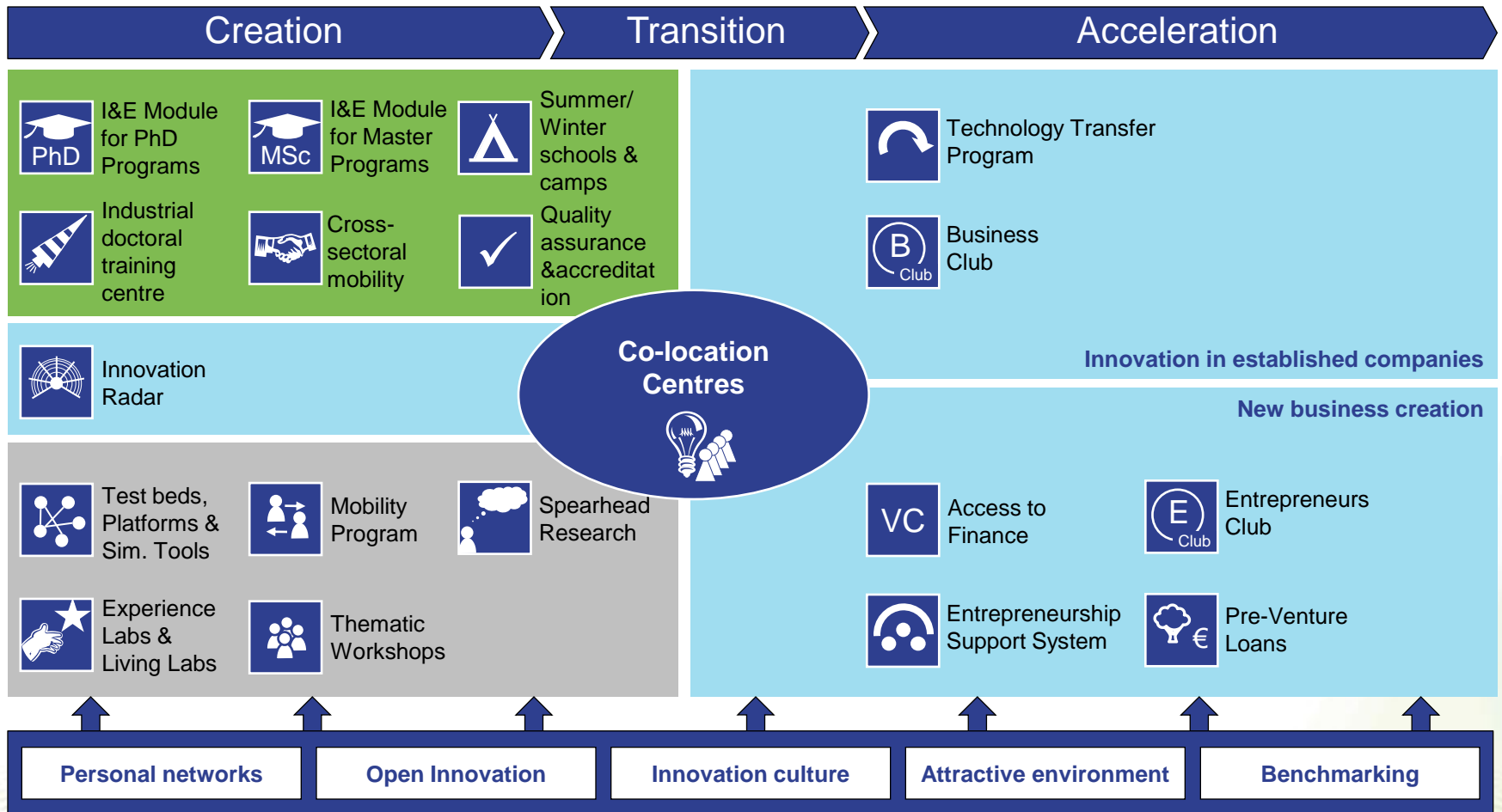
# Our Innovation Framework





# Innovation Catalysts

## Building a complementary, interacting innovation ecosystem





# How EIT ICT Labs differentiates from existing initiatives

EIT ICT Labs...

- acts as the foremost catalyst factory for **ICT innovation** in Europe
- creates and manages **innovation catalysts**
- focuses on the **Knowledge Triangle** – Education – Research – Business
- unites the **top European ICT players** from industry and academia
- supports **co-located execution** of focused thematic action lines
- delivers **societal innovations**

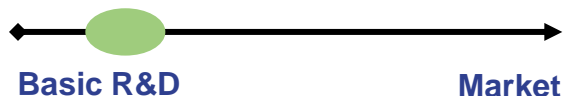


# The EIT is NOT just another EU funding instrument.

## Comparing the EIT to other EU funding instruments

### FP7 Energy

- **Goal:** Basic R&D projects, development of infrastructure and new technologies



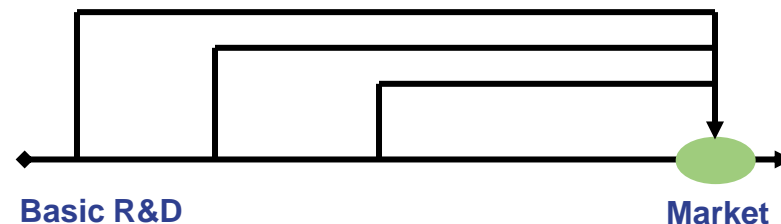
### Intelligent Energy Europe

- **Goal:** Using existing technologies and overcoming no- technological challenges



### EIT

- **Goal:** Achieving a long term vision (marketable innovation, „Grand Challenge“) using EIT funded instruments in the areas of education, research and business.





# Key Performance Indicators

## Goals

1. Address key societal challenges;
2. Foster world-class excellence;
3. Set a clear business-friendly framework;
4. Enhance the free flow of knowledge through co-location;
5. Promote new ways of educating people;
6. Create a new generation of entrepreneurs.

## Process

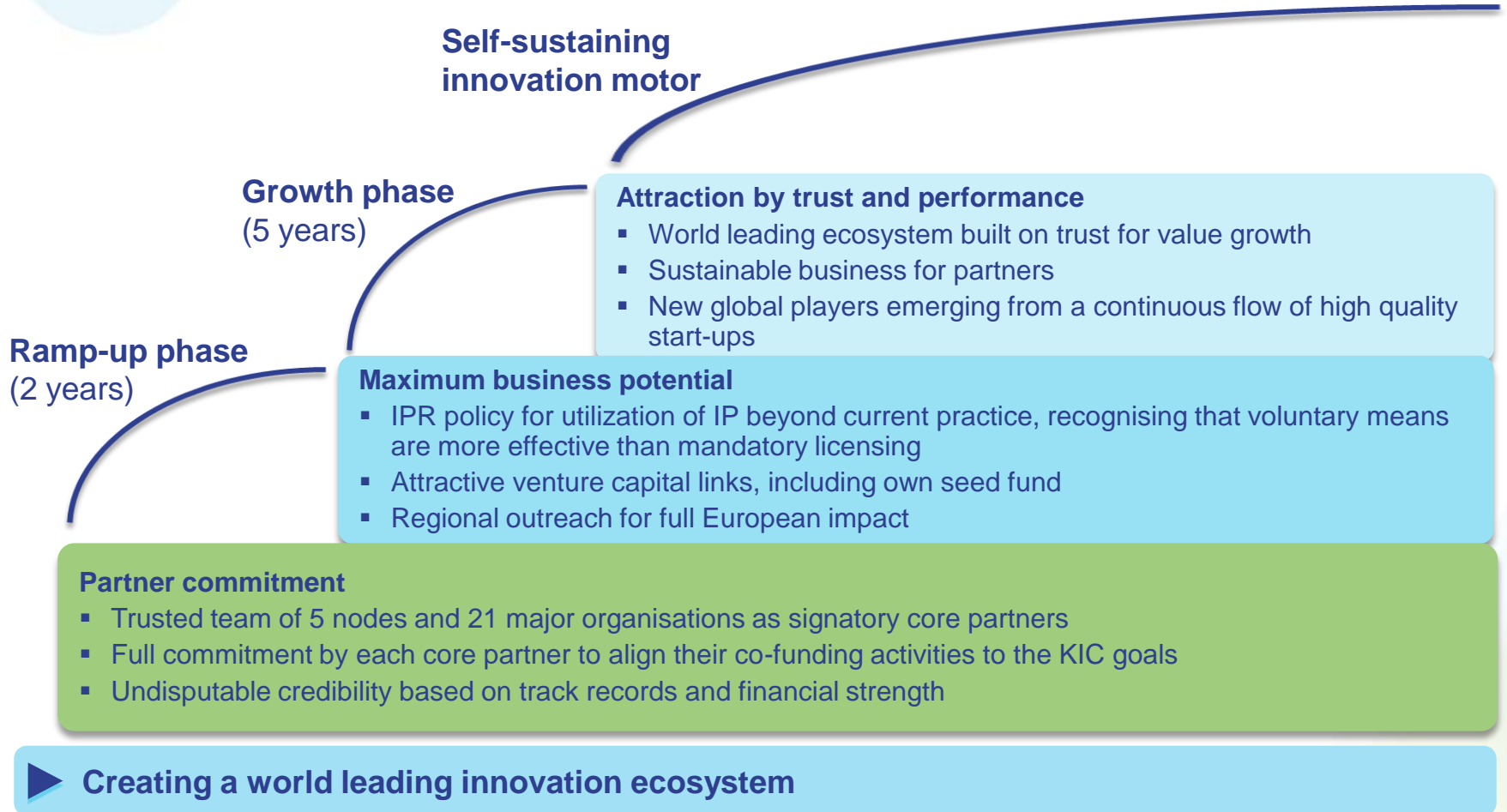
- Both input and output KPIs identified.
- Convert KPI set into balanced scorecards.
- Propagate down via action lines.
- During 2011 reference measurements will be collected.
- 2012 onwards targets will be set for each of these KPI's.

## EIT ICT Labs Quantitative KPIs

Education	Research	Business
<ul style="list-style-type: none"> <li>▪ # faculties teaching EIT branded programs (5)</li> <li>▪ # students following an EIT branded program (6)</li> <li>▪ # EIT branded MSc. and PhD. graduates (6)</li> </ul>	<ul style="list-style-type: none"> <li>▪ # successful utilisations of EIT ICT Labs catalysts to catalyse co-funded carrier activities (2)</li> </ul>	<ul style="list-style-type: none"> <li>▪ # ventures (6)</li> <li>▪ € from 3<sup>rd</sup> party investments (6)</li> <li>▪ # EIT ICT Labs catalysed products and services (3)</li> </ul>
<h3>Co-location and innovation networks</h3> <ul style="list-style-type: none"> <li>▪ Impact to key application domains with social significance (1)</li> <li>▪ Utilisation of EIT ICT Labs brokered platforms (Test beds, Living Labs, Experience Labs) (3)</li> <li>▪ Impact of Co-locations to mobility of people and ideas, co-located work (4)</li> </ul>		



# EIT ICT Labs Horizons





# EIT ICT Labs Key Messages 2011

We...

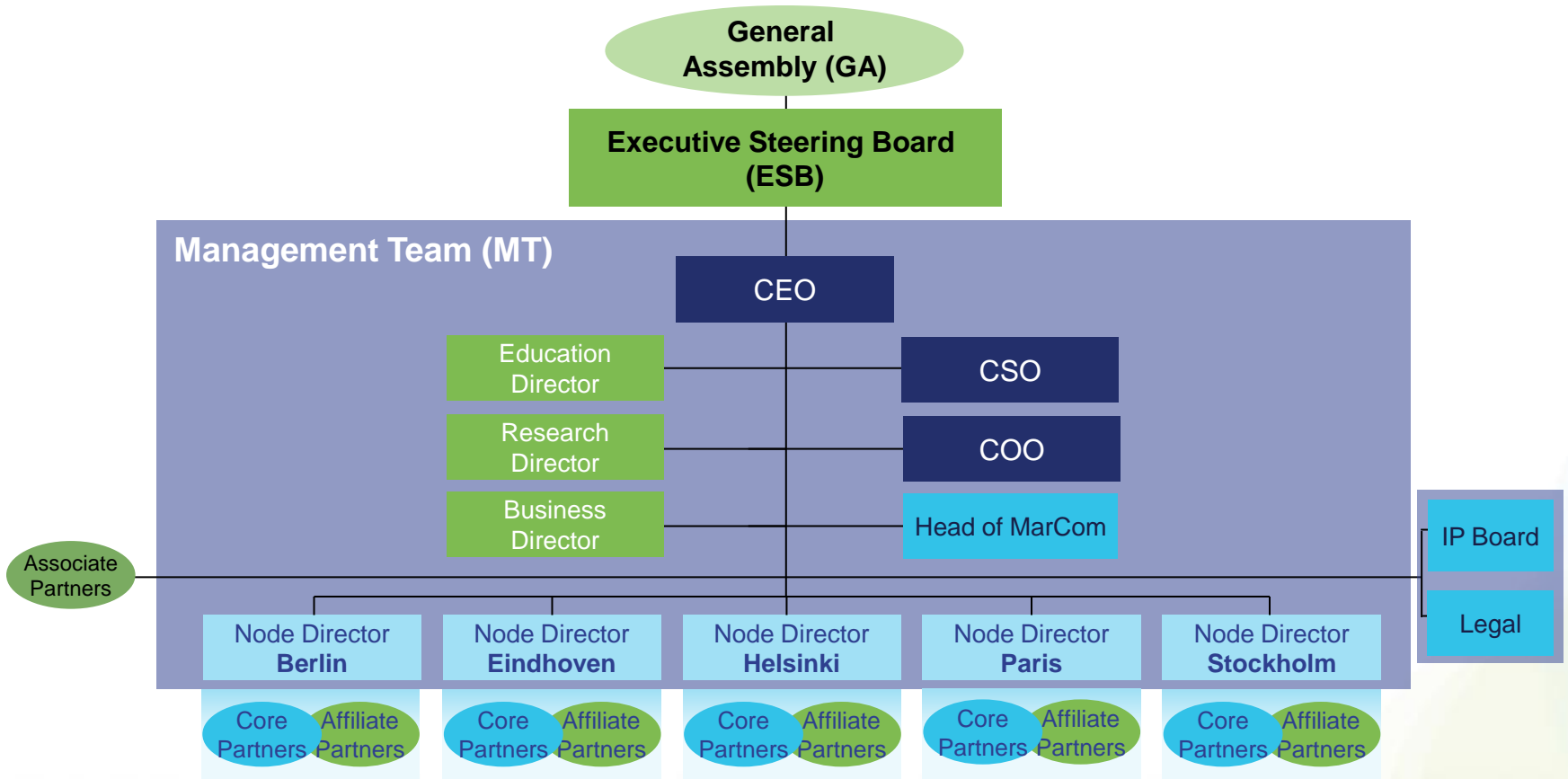
- breed entrepreneurial ICT top talent via the transformation of higher education to promote creativity and entrepreneurial spirit
- speed up ICT innovation by bringing people together from different countries, disciplines and organizations via mobility programs and co-location centres
- generate world-class ICT business via broader and faster valorisation of research results



**Additional slides**



# EIT ICT Labs Organisation





eit

Knowledge &  
Innovation  
Community

EIT ICT Labs

